

Articulation News Brief

San Diego Mesa College
February – March 2016

California State University General Education Breadth (CSUGE-B) Submission

The following courses have been submitted to the California State University for 2016-2017 CSUGE-B consideration:

ARTF 108	Women in Art	MUSI 117	Music in the United States
BUSE 120	Personal Financial Management	MUSI 118	Asian Music
COMS 160	Argumentation	MUSI 119	Music in the Americas, Africa and Europe
ECON 220	Economics of the Environment	MUSI 158A	Music Theory I
GEOL 120	Earth Science Laboratory	MUSI 158B	Music Theory II



Intersegmental General Education Transfer Curriculum (IGETC) Submission

The following courses have been submitted to the California State University and University of California for 2016-2017 IGETC consideration:

ARTF 108	Women in Art	MUSI 117	Music in the United States
ECON 220	Economics of the Environment	MUSI 118	Asian Music
GEOL 111	The Earth Through Time	MUSI 119	Music in the Americas, Africa and Europe
GEOL 120	Earth Science Laboratory		

INSIDE THIS ISSUE

16—17 CSUGE-B Submission	1
16—17 IGETC Submission	1
Curriculum Review Committee (CRC) Meeting Schedule	2
Curriculum Publication Deadlines	2
Curriculum and Instructional Council (CIC) Meeting Schedule	3
Important Dates	3

Mesa College Curriculum Review Committee (CRC) 2015 - 2016 Meeting Schedule (Thursdays, 2:15P.M.)

SPRING 2016

February 4, 2016

April 7, 2016

February 18, 2016

April 21, 2016

March 3, 2016

May 5, 2016

March 17, 2016



2015 - 2016 Publication Deadlines

CRC MEETING

April 21, 2016

PUBLICATION

2017 Spring Schedule

*Please note that all items submitted prior to and by these deadlines remain dependent upon subsequent CIC, Board of Trustee's and/or State approval. Until the appropriate subsequent approvals are given, items cannot be included in the listed publications. For updates and changes to deadlines please contact Curriculum Chair M. (Toni) Parsons @ (619) 388-2394.



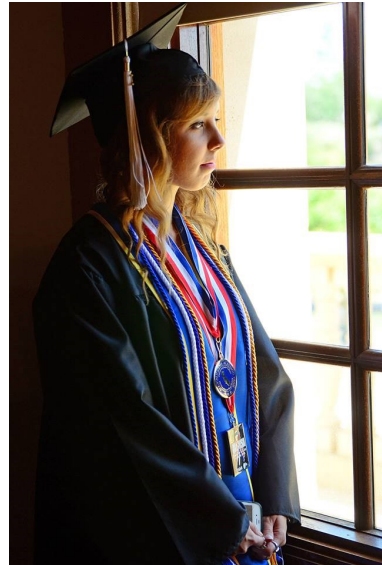
SDCCD Curriculum and Instructional Council (CIC) Meeting Schedule for 2015 - 2016 (Thursdays, 2:00P.M.)

CIC MEETING DATES

February 11, 2016
February 25, 2016
March 10, 2016
March 24, 2016
April 14, 2016
April 28, 2016
May 12, 2016

PROPOSALS DUE TO DISTRICT

January 22, 2016
February 5, 2016
February 19, 2016
March 4, 2016
March 25, 2016
April 8, 2016
April 22, 2016



Important Dates

SPRING 2016

APRIL

CSUGE-B/IGETC Submission Response for 2016-2017

SDSU Articulation Renewal Deadline for 2016-2017

SAN DIEGO MESA COLLEGE

**San Diego Mesa College
Articulation NewsBrief**
February—March 2016 Edition

7250 Mesa College Drive
San Diego CA 92111-4998

www.sdmesa.edu/articulation

ARTICULATION NEWSBRIEF

A communication link for the Mesa College community interested in articulation.

PUBLISHED BY

The San Diego Mesa College
Articulation Office

CONTENT

Juliette Parker
and

LAYOUT & DISTRIBUTION

Sue Saetia